



iGoDispatch
IXEG's Boeing-733
Desktop

WARNING

This application must not be used for real flight planning, aviation or navigation purposes.

All calculations performed by this application are based on navigation data from Aerosoft or Navigraph provided in X-Plane (v.2) or with the Application (v.1).

This application may contain bugs and may not perform as expected or promptly at all times.

The developer of the application declines any responsibility that may be caused by any use of the application under any circumstances other than X-Plane flight simulation.

Table of Contents

Preamble	4
iGoConnect	5
Install iGoConnect Plug-in	5
How it works.....	7
Update NavData	8
iGoDispatch	10
Installation.....	10
Update NavData	11
Set your IP Address and Port.....	13
Other Settings.....	14
Enter Your Flightplan	15
Loading Plane	25
ACARS	29
Procedures.....	31
Flight Performance	32
TRUBLESHOOTING YOUR CONNECTION PROBLEM	34

Preamble

Boeing 737-300 is a simulation plane model developed by IXEG specifically for X-Plane. iGoDispatch Boeing-733 (hereinafter referred to as the Application) is a desktop application that helps you create a flight plan; estimate the required amount of fuel for your flight; load the plane with passengers, cargo and fuel; calculate various plane parameters, such as %MAC and Center of Gravity offset; track the flight on a map; dynamically adjust some of the plane's parameters (e.g. the current Center of Gravity); and monitor your flight performance. It also includes inflight public announcements in several languages.

IMPORTANT! In order to perform certain functions, the application must be connected to X-Plane over the TCP protocol using the iGoConnect plug-in. Visit the following webpage to download the latest plug-in, read all documentation, and find a link to the support page:

http://igoapp.ca/page_igoconnect/igoconnect.html.

For this tutorial, we will create a flight plan from Toronto Pearson International Airport to Miami International Airport with an alternate airport in Fort Lauderdale.

Our flight plan will be as follows:

CYYZ BETES1 AIRRA Q103 PSK CAE J51 SAV J103 OMN HILEY6 KMIA

iGoConnect

iGoConnect is a plugin for X-Plane flight simulator. iGoConnect (hereinafter referred to as the Plugin) acts as a server that connects X-Plane to iGoDispatch using the TCP protocol. The Plugin performs the following actions:

- Searches navdata provided with X-Plane or the Application for specific airports and waypoints and sends it to the Application to create a flightplan.
- Adjusts loading parameters (e.g., Center of Gravity offset, payload weight, and fuel weight) of the plane by changing the relevant datarefs in X-Plane based on calculations performed in the Application.
- Communicates to the Application a number of X-Plane datarefs (ACARS data), such as the plane's position (latitude and longitude); heading (true and magnetic); weight; available fuel; current fuel flow; ground speed; and altitude. In return, the Application dynamically adjusts the current plane's CG offset during the flight resulting in greater flight realism (X-Plane 11 only; in X-Plane 12, CG is adjusted automatically whenever weights are changed).
- The Plugin monitors the main flight parameters, such as G-force, turbulence, maximum speeds, lights, flaps, gear, etc., and determines if any of them have been violated or exceeded. It then creates a Flight Performance Report, which can be later displayed in the Application.

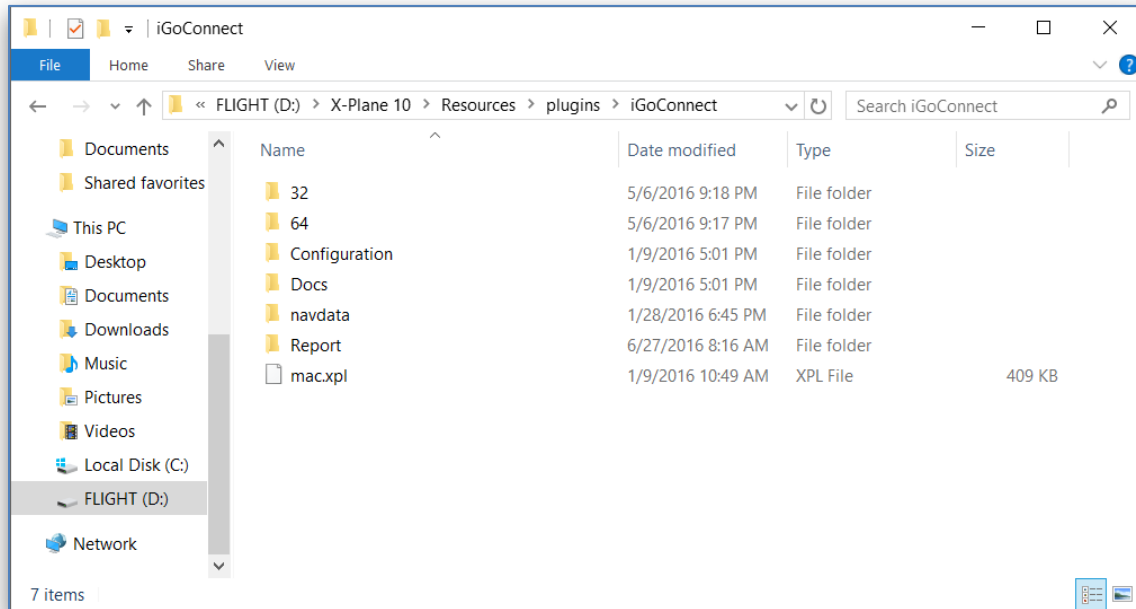
Install iGoConnect Plug-in

The Plugin is a so-called fat plugin, i.e. it includes all necessary files inside one folder called iGoConnect. In order to install the Plugin, do the following:

1. Download the file iGoConnect_vX.X.zip from either website:
 - http://igoapp.ca/page_igoconnect/igoconnect.html
 - <http://forums.x-pilot.com/files/file/707-igoconnect/>

2. Unzip and move the **iGoConnect folder** to the following location:

- Your X-Plane folder\Resources\plugins\



3. Make sure the Plugin folder includes the following subfolders:

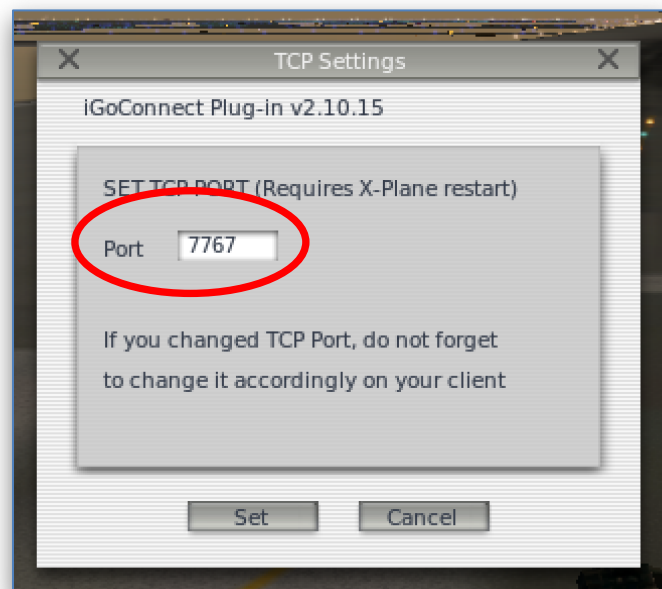
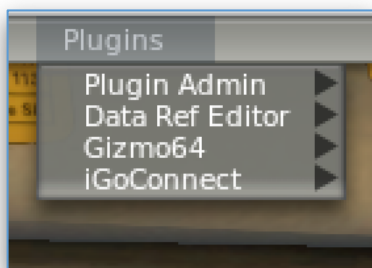
- 32 – contains the 32-bit plugin files for Windows and Linux (for older versions of X-Plane);
- 64 – contains the 64-bit plugin files for Windows and Linux;
- mac.xpl – plugin for Mac (Intel and Silicon);
- Configuration – contains the following configuration files:
 - preferences.cfg – stores the value of IP Port and other information;
 - planedata.cfg – stores plane technical characteristics used to monitor the flight performance, such as Vmo|Mmo, Flaps limitation speeds, VLE,VLOE, VLOR, Maximum Ramp Weight, Maximum Takeoff Weight, Maximum Landing Weight;
- Docs – contains License Terms, Manual, and other documents, if available;
- navdata – contains a navigation dataset from Aerosoft or Navigraph (Plugin version 2.X only); and

- Report – contains performance files that are passed to the Application to create a performance report.

How it works

The interface of the Plugin is extremely easy. In fact, you do not need to do anything. By default, both the Plugin and the Application have the same Port – 7767. You only need to modify its settings if, for some reason, you want another port assigned to the TCP connection.

In this case, go to the Plugins tab in X-Plane, select iGoConnect and in the opened TCP Settings window type the new TCP Port. Click on Set and restart X-Plane. Do not forget to change the Port value in the Application.



IMPORTANT!

If you have problems connecting the iGoDispatch application to the computer with X-Plane running, refer to Section “Troubleshooting Your Connection Problem”.

Update Navdata

The Plugin version 2.X and below uses navdata provided by Aerosoft (data by Navigraph is also compatible), whereas version 3.X and higher is linked directly to navdata in X-Plane.

Before updating navdata, verify which version of the Plugin you have.

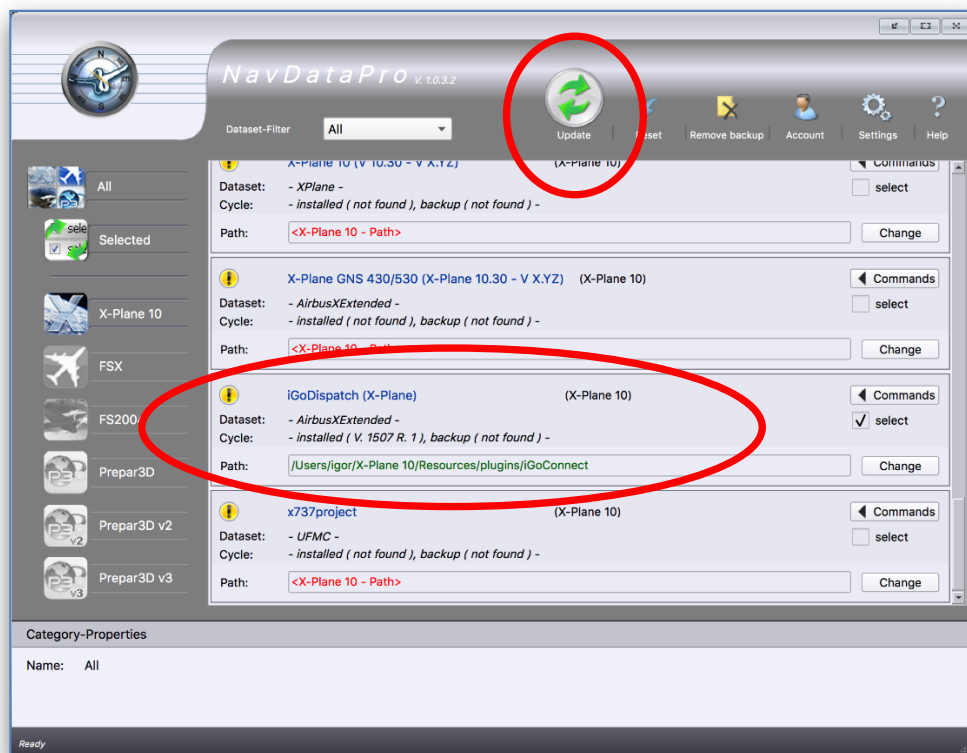
Version 3.X

The Plugin version 3.X and higher uses default or custom data provided with X-Plane. Refer to the Aerosoft and Navigraph guides on how to update their navdata for the simulator.

Version 2.X

The Plugin comes with the default navdata from Aerosoft. The navdata is needed for the iOS version of the application only. **Version 2 of the Plugin is not compatible with version 2 of the Application**, which uses its own navdata (see Section “iGoDispatch. Update Navdata” for more details).

Updating Aerosoft navdata



1. Open the NavDataPro application;
2. In the X-Plane, find **iGoDispatch (X-Plane)**.
3. Change the path to point to the location where the iGoConnect plugin is located.
4. Check the Select box and click on the Update icon.
5. Click on Download to download and install the updated navdata.

Updating Navigraph navdata

Wilco A320 PIC for FS2002	No	2016-07-19	1	3.52 MB	Download
Wilco CRJ Next Generation	Yes	2016-07-19	1	19.90 MB	Download
Wilco Falcon7X	Yes	2016-07-19	1	9.12 MB	Download
Wilco/Feelthere 737/777, Legacy, Airbus Series	Yes	2016-07-19	1	19.71 MB	Download
Wilco/Feelthere CRJ	No	2016-07-19	1	4.73 MB	Download
World Traffic 2.0 (and above) - native**	Yes	2016-07-19	1	17.60 MB	Download
x737FMC - native**	Yes	2016-07-19	1	14.81 MB	Download
X-FMC 2.5 (and above) - native**	Yes	2016-07-19	1	18.33 MB	Download
X-Plane 10.30 (and above) - native**	No	2016-07-19	1	5.47 MB	Download
X-Plane GNS430, 777 Worldliner (Ext/Prof), Flightfactor B757 Professional, VMAX B767-300ER Professional, X-Crafts Embraer E-175 - native**	Yes	2016-07-19	1	14.53 MB	Download

* Contrary to other FMS Data files, access code are limited in time. An access code will enable use of the current AIRAC cycle during the current and the following cycle.

** A "native" version of a download is identical to the regular download, but there is no installer program. The data is provided in a ZIP file which needs to be extracted manually in the correct folder. This version is only recommended for advanced or non-Windows users.

Access to the data is determined by your **subscription** start date and end date, which is printed on your receipt. NOTE: We never provide access to previous cycles, neither data files nor access codes, and regardless of your previous purchases. We only keep the current cycle on the server, and if you have an active subscription, you may download.

1. Login to <http://www.navigraph.com>;
2. Go to **Products -> FMS Data -> Manual Install**;
3. Find FMS data for **"X-Plane GNS430, 777 Worldliner (Ext/Prof), Flightfactor B757 Professional, VMAX B767-300ER Professional, X-Crafts Embraer E-175 - native**"**
4. Click Download.
5. Unzip the downloaded file.
6. Copy the folder **"navdata"** in the unzipped file and paste it in **[X-Plane 10 folder]/Resources/ plugins/iGoConnect/**.
Replace the folder when prompted.

iGoDispatch

Installation

On Windows, download the installation file (iGoDispatchBoeing733.exe) to any location of your hard drive. Launch the file and follow the instructions. By default, the application and other sub-folders will be installed in the following directory: **C:\Program Files (x86)\iGoDispatchBoeing733**.

On OS X, download the installation file (iGoDispatchBoeing733.dmg) to any location of your hard drive. Launch the file and follow the instructions. By default, the application will be installed in the following directory: **Macintosh HD\Applications\iGoDispatchBoeing733**. Other sub-folders are installed in the following directory: **Macintosh HD\ Library\ iGoDispatchBoeing733**.

IMPORTANT!

Java Runtime Environment is required to use the Application (version 8 or higher). The Java library is already included with the OS X installation file, so it is not necessary to install Java if you use a Mac computer. The Windows version of the application does not include the Java library, so make sure you have the latest version of Java installed on your computer to run the Application.

The Application includes the following sub-folders and files:

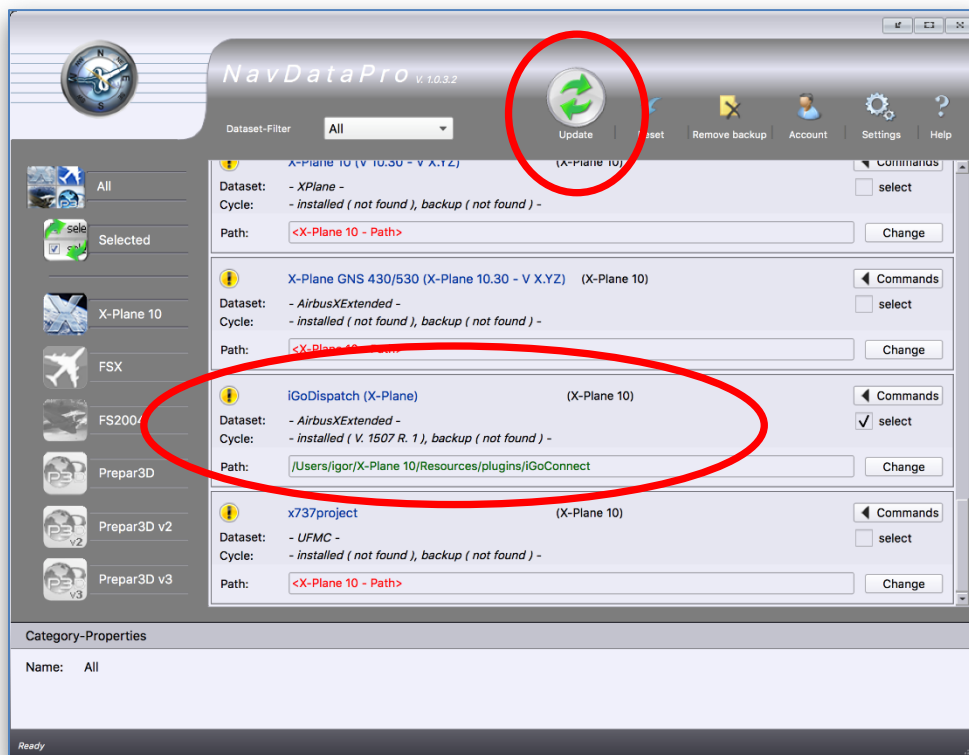
- **config** – includes the following files:
 - **cfg.xml**: this file is created when the Application is launched for the first time. It includes any changes you make in the Application's settings.
 - **LogIGD.txt**: this file is created every time the Application is launched. This is a log that lists all activities performed by the user. This is a useful tool that allows debugging the Application if you have any problems with it.

- **flightplans** – includes all flightplans created and saved by the user using the Application.
- **license** – includes license information for the Application and third-party libraries.
- **navdata** – contains a navigation dataset from Aerosoft or Navigraph. **IMPORTANT: This folder is not included with version 2.X of the Application since it uses navdata provided with X-Plane.**

Update Navdata (ONLY version 1.X)

It is recommended to update the navigation dataset either using navdata from Aerosoft or Navigraph.

Updating Aerosoft navdata



1. Open the NavDataPro application;
2. In the X-Plane 10 tab, find **iGoDispatch (X-Plane)**.
3. Change the path to point to the location where the **iGoConnect** plugin is located.

4. Check the Select box and click on the Update icon.
5. Click on **Download** to download and install the updated navdata.
6. Copy the content of the “**navdata**” folder and paste it into:
 - Windows: **C:\Program Files (x86)\iGoDispatchBoeing733\navdata\.**
 - Mac: **Macintosh HD\Library\iGoDispatchBoeing733\navdata\.**

Updating Navigraph navdata

Wilco A320 PIC for FS2002	No	2019-01-24	1	3.60 MB	Download
Wilco CRJ Next Generation	Yes	2019-01-24	1	20.81 MB	Download
Wilco Falcon7X	Yes	2019-01-24	1	9.61 MB	Download
Wilco/Feelthere 737/777, Legacy, Airbus Series	Yes	2019-01-24	1	20.80 MB	Download
Wilco/Feelthere CRJ	No	2019-01-24	1	4.87 MB	Download
World Traffic 2.0 (and above) - native**	Yes	2019-01-24	1	19.01 MB	Download
x737FMC v3.4 (and above) - native**	Yes	2019-01-24	1	21.42 MB	Download
X-FMC 2.5 (and above) - native**	Yes	2019-01-24	1	19.82 MB	Download
X-Plane 10 (10.30+) - native**	No	2019-01-24	1	5.78 MB	Download
X-Plane 11 - native**	Yes	2019-01-24	1	16.82 MB	Download
X-Plane GNS430, FF757/767/777, X-Crafts Embraer E-175, Aerobask SkyView, JRollon Planes CRJ200, JARDesign A320/A330, ToLiss A319 (XP10), STMA Aircraft - native**	Yes	2019-01-24	1	15.56 MB	Download

1. Login to <http://www.navigraph.com>;
2. Go to **Products** -> **FMS Data** -> **Manual Install**;
3. Find FMS data for “**X-Plane GNS430, FF757/767/777, X-Crafts Embraer E-175, Aerobask SkyView, JRollon Planes CRJ200, JARDesign A320/A330, ToLiss A319 (XP10), STMA Aircraft - native**”
4. Click Download.
5. Unzip the downloaded file.
6. Copy the folder “**navdata**” in the unzipped file. Go to the following directories:
 - Windows: **C:\Program Files (x86)\iGoDispatchBoeing733\.**
 - Mac: **Macintosh HD\Library\iGoDispatchBoeing733\.**
 Paste the new folder and replace the old one when prompted.

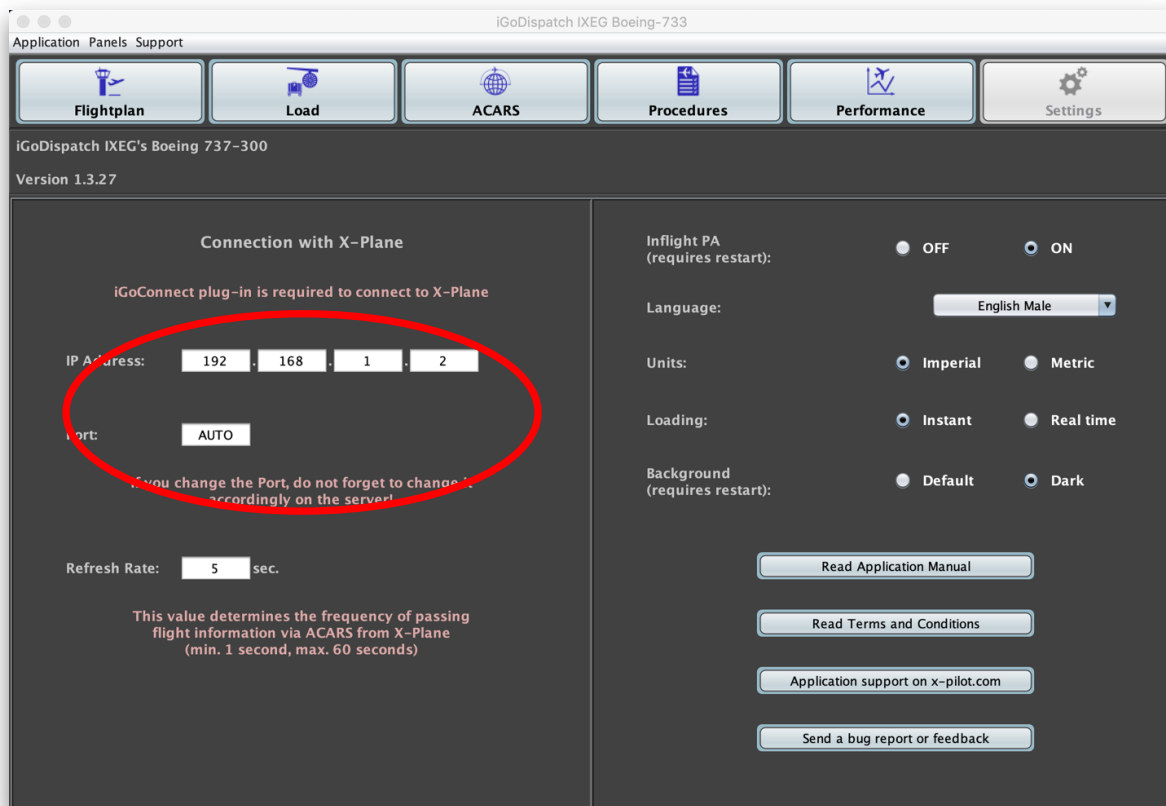
Version 2 of the Application uses navdata provided with X-Plane. Refer to the Aerosoft and Navigraph guides on how to update their navdata for the simulator.

Set your IP Address and Port

Certain functions of the Application require that TCP connection be established via Wi-Fi with X-Plane through the iGoConnect plugin. Always make sure that the latest version of the Plugin is installed in X-Plane.

First, identify the IP address of the computer where X-Plane is installed. Refer to PC, Mac or Linux documentation to learn how the IP address can be identified. Enter the IP address in the textboxes.

Open the **Settings** panel of the Application.



For the TCP connection to be established, you also need to identify the Port number. The default port number for the Application is 7767 (displayed on the Application as “AUTO”). If any of your other programs already use this port, you may change it. If you change the port, make sure that the same port number is set in both the Application and the Plugin. Changing the port in X-Plane requires restarting the simulator.

Other Settings

The Application includes an option to have inflight public announcements during the flight. To enable the option, click on the **Inflight PA ON** radio button. Enabling or disabling public announcements requires restart of the Application.

You may also select the language of the announcements using the **Language** drop-down list. It is possible to change languages during the flight.

IMPORTANT! The ACARS connection with X-Plane is required for the inflight public announcements to work. If the Application is disconnected from the simulator, the announcements will be disabled even if the switch remains in the ON position. Refer to section “ACARS” regarding establishing the connection.

You may also select the Units of Measurement displayed in the Application by selecting Metric or Imperial units using the Units radio buttons.

Other settings include the Application background color (dark by default) and the loading mode. Select the **Instant** radio button to load passengers and fuel instantly and the **Real time** radio button to enable loading passengers and fuel in real time. Depending on the number of passengers and the amount of fuel to be loaded, it may take approximately 30 minutes for payload and 20 minutes for fuel.



The Settings panel also contains links to support information for the Application, as well as the Terms and Conditions.

Enter Your Flightplan

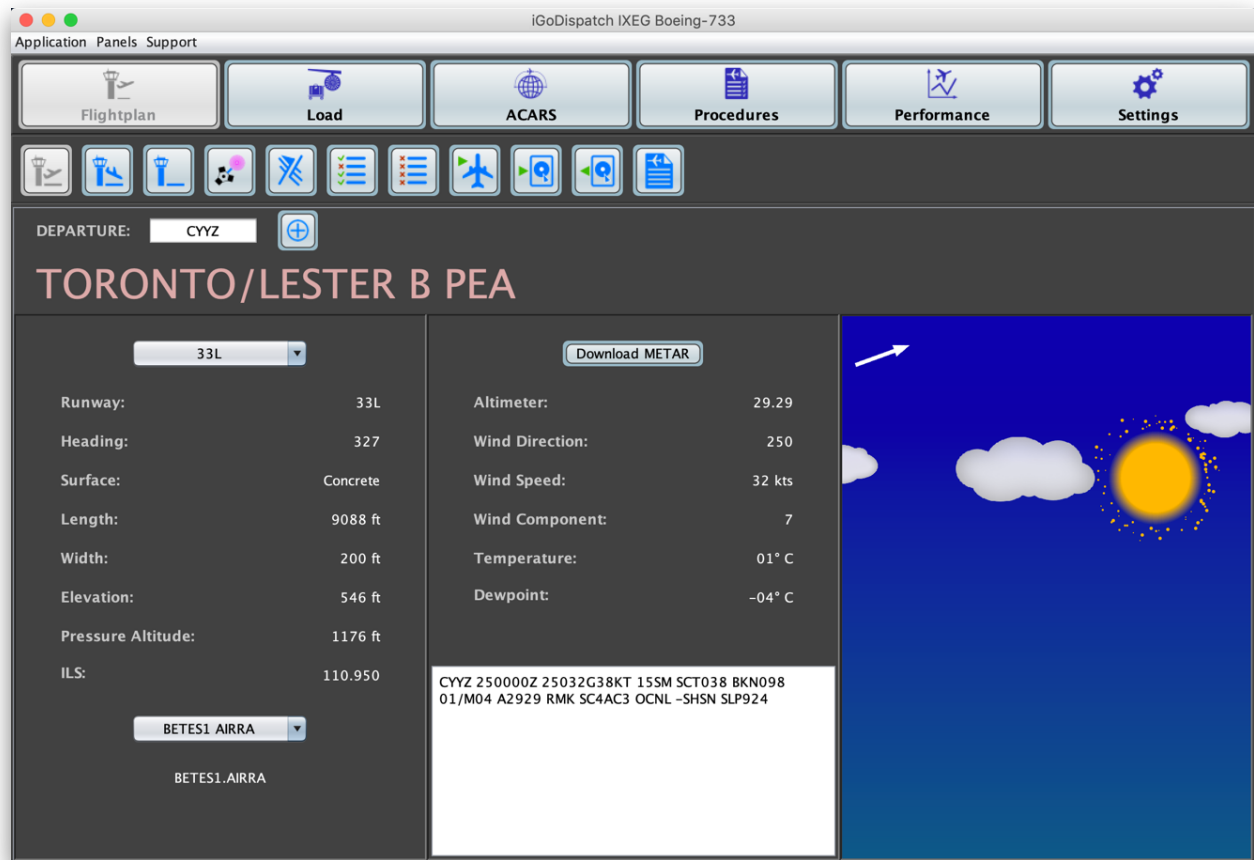
IMPORTANT! Version 2 of the Application uses X-Plane navdata. To be able to enter or edit a flightplan in the Application, you **MUST** be able to connect to X-Plane through the iGoConnect Plugin. Open X-Plane, load the plane, make sure the Settings screen of the simulator is closed. Follow the procedures below. If you have problems with connecting to X-Plane, refer to Section “Troubleshooting Your Connection Problem”.



There are multiple ways to enter a flightplan in the Application. You may enter it yourself using the Departure, Destination, Alternation, and Waypoints panels. You may also copy and paste the flightplan from other sources, such as a text file or a website. Or you may save your flightplan on the hard drive of your computer and then open it later.

Enter a new flightplan



Open the Departure Airport panel by clicking on button . Enter the ICAO code of the airport in the textfield (e.g., CYYZ) and press button . Once the airport navdata is downloaded, you may select the departure runway and SID based on the current METAR information from the National Oceanic and Atmospheric Administration website (www.noaa.gov). METAR may be downloaded by pressing the **Download METAR** button.

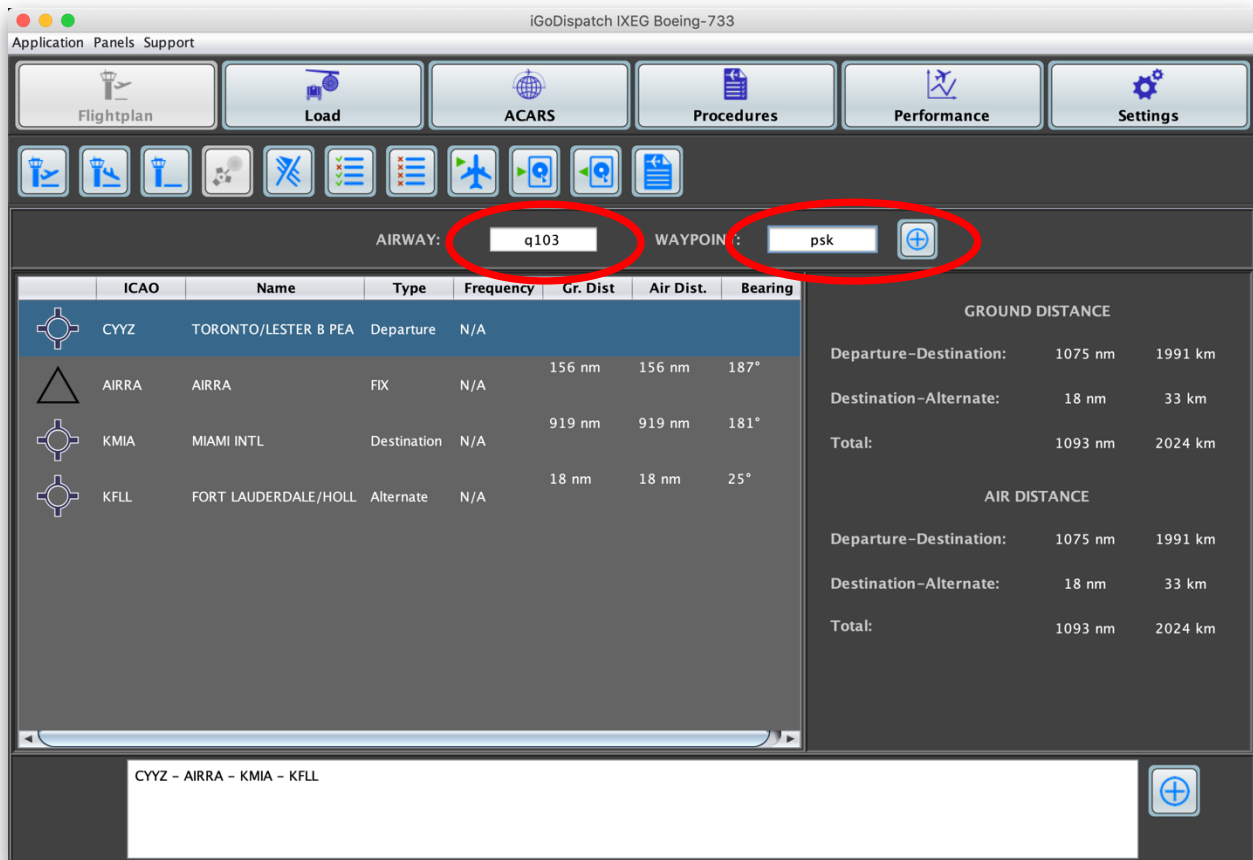
The individual panels for each airport will display the temperature, current winds information, indicated and pressure elevations, and wind component.



Do the same for the Arrival (button ) and Alternate (button ) airports (optional).

Waypoints and airways can be entered in the corresponding textboxes on the **Waypoints and**

Distance panel. Go to the panel by clicking on button . It is not mandatory to enter an airway. If your next waypoint is a direct leg to the next waypoint, leave the airway textbox blank. Do not write “DIRECT”. However, when you have an airway, you must include the destination (transition) waypoint within your airway. If the waypoint is not identified as part of the airway, the airway will be not be added to the flight plan. Once you entered your waypoint and an airway, if required, press button .




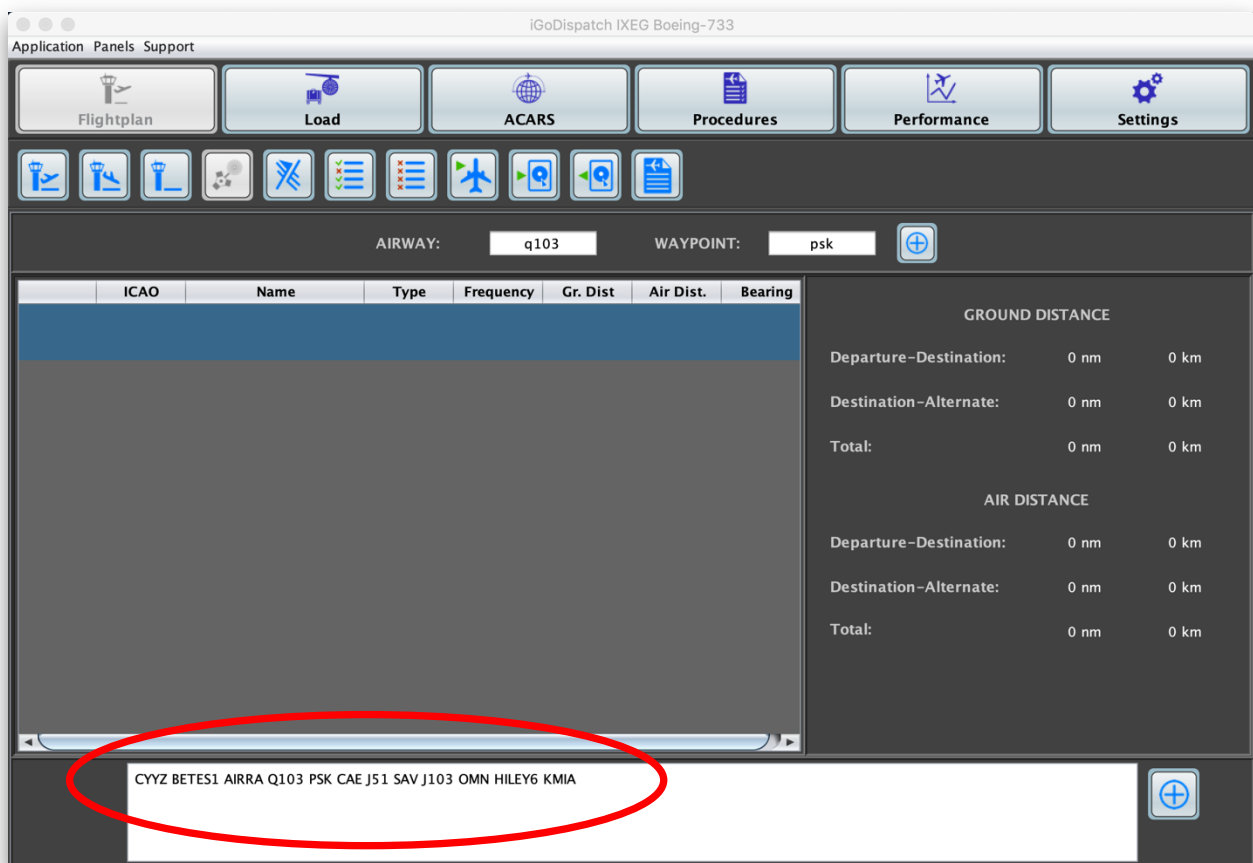
IMPORTANT! If a waypoint is already included in the SID procedures, you do not have to enter it again as a new waypoint. However, in this case, this waypoint is identified as part of SID and therefore will not be included in the fpl file needed to load co-routes in the plane FMC (co-routes cannot include SIDs, STARs, and Approach procedures). Moreover, fpl files do not allow having an airway immediately follow the departure airport. Otherwise, the flight plan cannot be loaded. In the above case, not including AIRRA as an additional waypoint after BETES1 SID with a transition point AIRRA will result in dropping both waypoint AIRRA and airway Q103 (i.e., the flight plan will be as follows: “CYYZ PSK KMIA”). Therefore, if you plan to use co-routes on FMC it is recommended that you add AIRRA even if you have this waypoint as part of the SID.

If the original and final waypoints within the same airway are located next to each other (no other waypoints in between), the application currently removes the airway name and treats it as a DIRECT leg from one waypoint to another. This may be revised in future releases.

If navdata includes more than one waypoint with the same name, a list containing all of these waypoints will be displayed so that the required waypoint can be selected. The waypoint closest to the last point in the flight plan will be displayed first and pre-selected.

Paste a flightplan from other sources

The flightplan can be copied from another source, such as a text file, website, etc. Copy the original text with a plan, select the text area at the bottom of the **Waypoints and Distance** panel, hit Ctrl+V to paste the plan, and press button  to upload it to the application.





The text pasted into the text area is not case sensitive. Depending on the complexity of the plan, it may take several seconds to complete uploading.

IMPORTANT! When the flightplan is pasted into the application, SIDs and STARs will be ignored. Add them manually using the airport panels.

Save and open a flightplan from the hard drive

A completed flightplan can be saved to your hard drive and loaded later. The plans will be saved in the following directories:


- Windows: **C:\Program Files (x86)\iGoDispatchBoeing733\flightplans\.**
- Mac: **Macintosh HD\Library\iGoDispatchBoeing733\flightplans\.**


To save a flightplan, press button . To load a flightplan from the hard drive, press button  and select the required file from a list of saved plans.

IMPORTANT! When the flightplan is loaded from your hard drive, SIDs and STARs will be ignored. Add them manually using the airport panels.

IMPORTANT! Application version 2.X only: Loading the flightplan from your hard drive still requires that the Application is connected to X-Plane through the iGoConnect Plugin. Make sure that the simulator is open before loading the flightplan.


Edit or delete the flightplan

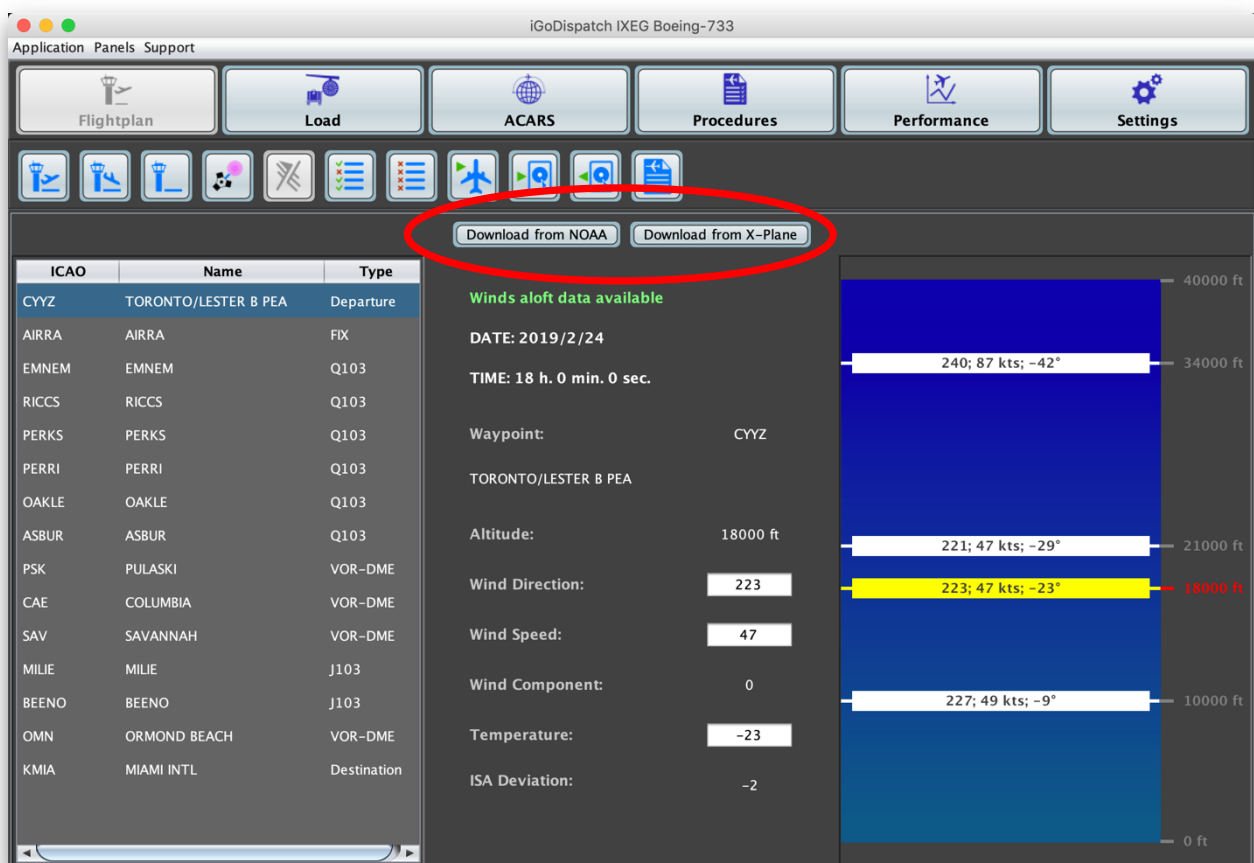
Once completed, the flightplan can be edited or completely deleted. In order to delete a particular waypoint in the flightplan (with the exception of the Departure, Arrival or Alternate airports), select the waypoint and press button .

To delete the whole flightplan, press button  and confirm deletion.

Once the flight plan has been deleted, all related information including the route and METAR will be permanently removed.

Winds Aloft

Go to the **Winds Aloft** panel by pressing button . There are three ways to set winds aloft data in the application: the data may be downloaded from the National Oceanic and Atmospheric Administration (NOAA) servers; the data may be downloaded from X-Plane (useful when custom winds are set in the simulator); and the data may be manually edited in the Application for each waypoint in the flightplan.



Application Panels Support

Flightplan Load ACARS Procedures Performance Settings

Download from NOAA Download from X-Plane

ICAO	Name	Type
CYYZ	TORONTO/LESTER B PEA	Departure
AIRRA	AIRRA	FIX
EMNEM	EMNEM	Q103
RICCS	RICCS	Q103
PERKS	PERKS	Q103
PERRI	PERRI	Q103
OAKLE	OAKLE	Q103
ASBUR	ASBUR	Q103
PSK	PULASKI	VOR-DME
CAE	COLUMBIA	VOR-DME
SAV	SAVANNAH	VOR-DME
MILIE	MILIE	J103
BEENO	BEENO	J103
OMN	ORMOND BEACH	VOR-DME
KMIA	MIAMI INTL	Destination

Winds aloft data available

DATE: 2019/2/24

TIME: 18 h. 0 min. 0 sec.

Waypoint: CYYZ

TORONTO/LESTER B PEA

Altitude: 18000 ft

Wind Direction: 223

Wind Speed: 47

Wind Component: 0

Temperature: -23

ISA Deviation: -2

40000 ft

34000 ft

21000 ft

18000 ft

10000 ft

0 ft

240; 87 kts; -42°

221; 47 kts; -29°

223; 47 kts; -23°

227; 49 kts; -9°

Press button **Download from NOAA** to download the current winds and temperatures information from the NOAA servers. The information is downloaded for three altitudes: 10000 feet, 21000 feet, and 34000 feet. Temperature, winds speed and direction are then

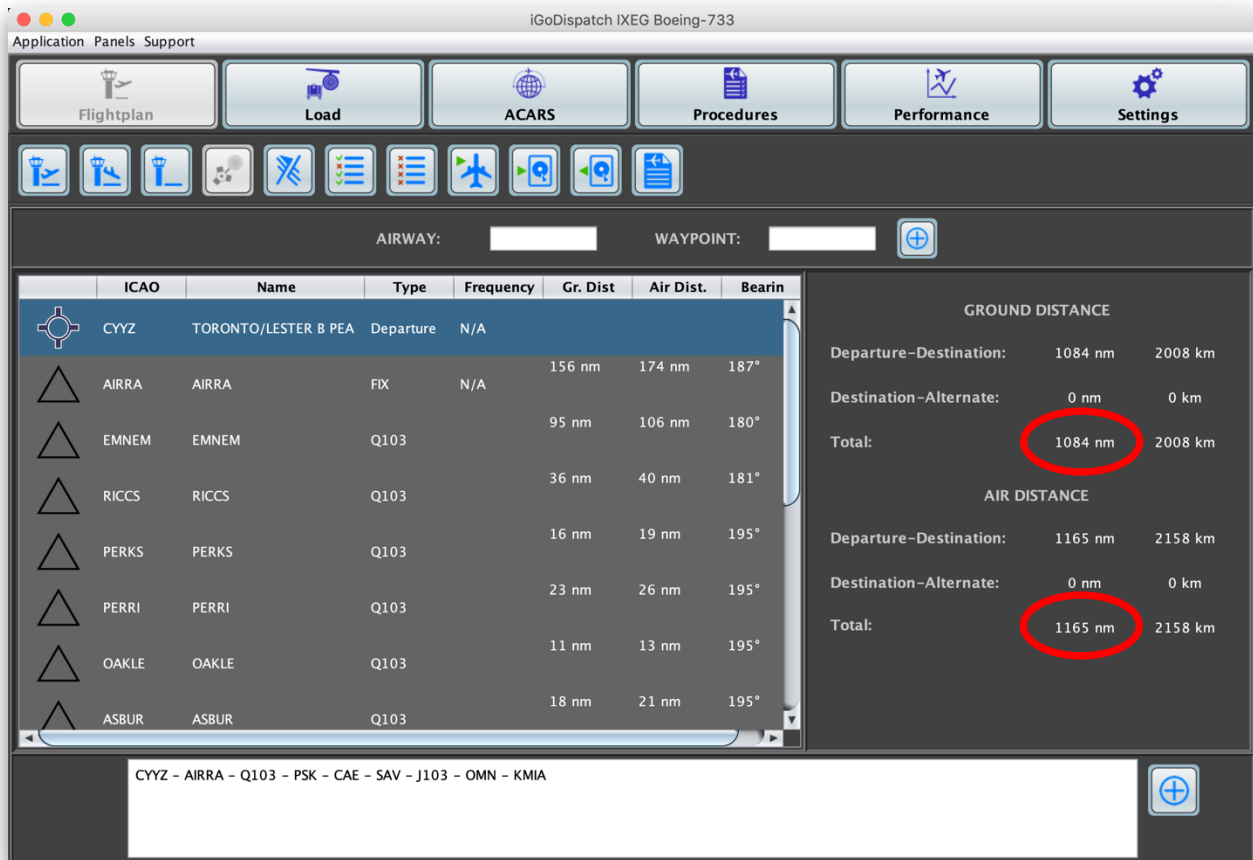
interpolated for each waypoint in the flightplan based on its altitude. If the plan has been modified (for example, a new waypoint or an alternate airport has been added), the winds data will be erased; it must then be downloaded again. Therefore, it is recommended to download the winds aloft information once your flightplan has been finalized. Once winds aloft data have been downloaded, the application will also display date and time when these data were acquired.

In order to download the current winds information from X-Plane, press button **Download from X-Plane**. Similar to the data downloaded from the NOAA servers, winds information from X-Plane is also interpolated for each waypoint in the flightplan based on the settings in the simulator. Wind direction and speed, as well as the altitude level can be modified directly in X-Plane.

IMPORTANT! X-Plane 11 data does not include temperatures at the selected altitude; therefore, the ISA Dev will not be calculated in this case. X-Plane 12 will include temperatures and the ISA Dev information.


Wind direction, speed, and temperature can also be manually edited for each waypoint in the flightplan. The edited information will be applied only to the selected waypoint.

Downloading winds aloft data results in determining the air distance where wind component for each leg of your trip is taken into account. The air distance will be used to calculate the required trip fuel and time. If neither wind direction nor speed is entered, the air distance will equal the ground distance.

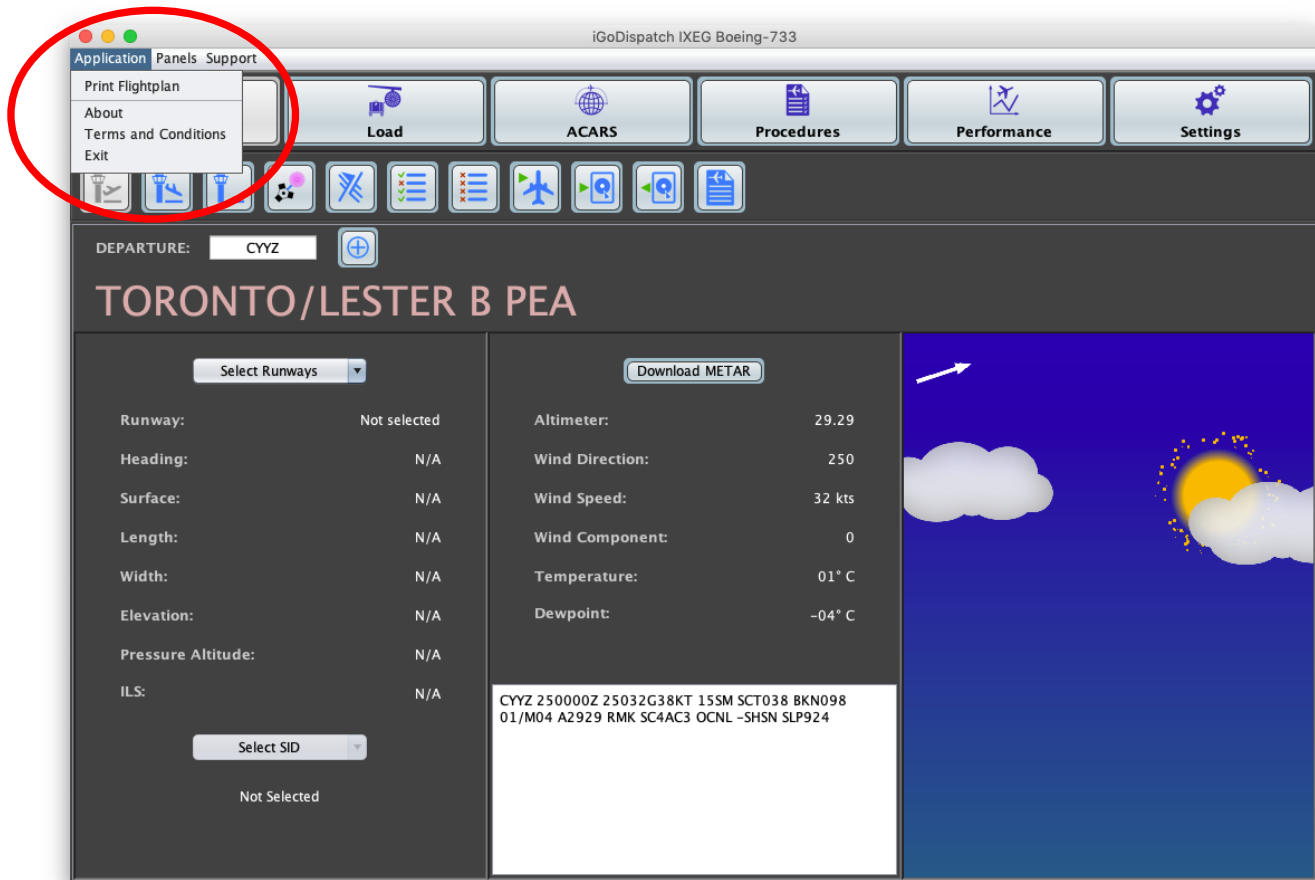


Printing a Flight Plan as a PDF file

The flightplan can be printed as a PDF file.

Once all flight information has been entered in the application, press button  in the **Flightplan** panel. After that, you may also add maps to the PDF file. To do so, go to the **ACARS** panel and press the same button. It is possible to add as many maps as you want. **It is important to save a flightplan as a PDF file prior to adding a map image.** Otherwise, a warning message will be displayed prompting to save the plan first.


In order to open the PDF file and/or print it, select **Print Flightplan** in the Menu bar. Alternatively, the file can be opened from the File Explorer/Finder. The file is located in the **flightplans** folder of the application (see section **Installation** for more details).



Parsing Flight Plan to FMC

The entered flight plan can be parsed to the plane's co-route folder (through the Wi-Fi connection), saved as an fpl file, and then uploaded on your FMC.

IMPORTANT! Both iGoConnect plug-in and the Boeing-733 plane must have navdata from the same publisher (Navigraph or Aerosoft) and of the same AIRAC cycle. Failure to do so may result in missing airports and waypoints and inability to load the flight plan on your FMC.

Press button  to parse the flight plan to X-Plane. Once the flight plan is parsed to your X-Plane folder, a notification message will be displayed in the Application.

Go to the FMC, click on the **RTE** button, and type the file name as follows: **[ICAO code for departure][ICAO code for destination]** (no spaces).



A file with the same name was to be saved in the coroute folder of your plane. If the file is found and does not contain any errors, the co-route is loaded and can be activated.

IMPORTANT! Make sure that the root folder of the plane has folder “coroute”, otherwise parsing the flightplan to FMS will fail.



Loading Plane

The **Load** panel allows you to select your Flight Level, as well as ground APU and taxi time. It also lets you select whether APU will be used during cruise, whether you are constrained by the 250 knots speed limitation below the altitude of 10000 feet, which A/C pack regime will be used during flight, and whether wing or engine A/I systems will be operational. All of this will have an impact on the amount of fuel required for your trip.


IMPORTANT! The most recent version of iGoConnect must be installed in X-Plane to correctly load passengers, cargo, and fuel via the Network.

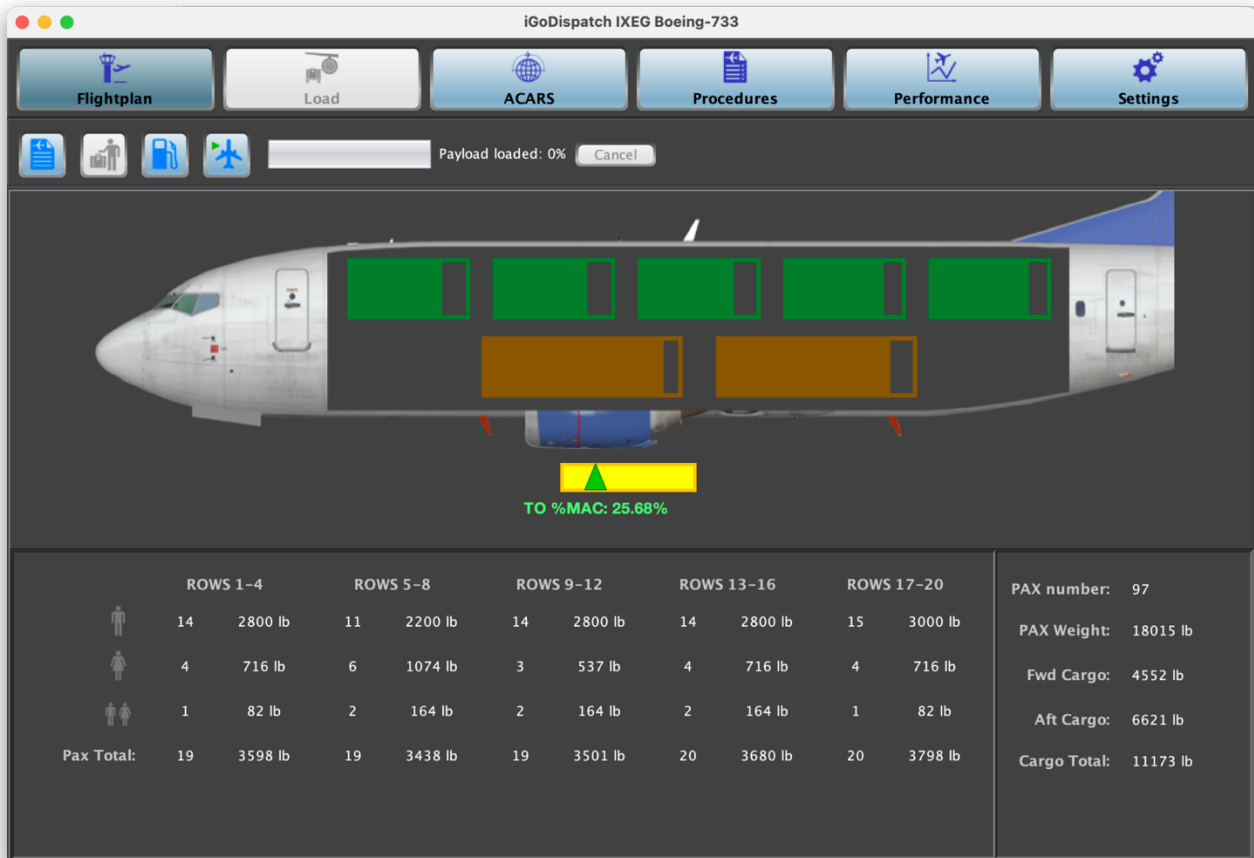
The screenshot shows the iGoDispatch IXEG Boeing-733 application interface. The top navigation bar includes buttons for Flightplan, Load, ACARS, Procedures, Performance (selected), and Settings. Below the navigation bar, there are three main panels. The Performance panel is active and displays the following data:

Flight Level:	32000	PLANE WEIGHTS AND CG		REQUIRED FUEL	
Fuel Planning:	Long Range Cruise	Empty Weight:	72380 lb	APU and Taxi:	712 lb
APU Ground Time (min):	25	Payload Weight:	23059 lb	Trip Burn:	14614 lb
Taxi Time (min):	25	Zero Fuel Weight:	95439 lb	Contingency:	3654 lb
APU during flight:	<input type="radio"/> OFF <input checked="" type="radio"/> ON	Fuel Weight:	26918 lb	Final Reserve:	2414 lb
250 KIAS Limitation:	<input type="radio"/> OFF <input checked="" type="radio"/> ON	Ramp Weight:	122357 lb	Alternate:	0 lb
A/C Packs:	<input checked="" type="radio"/> LOW/AUTO <input type="radio"/> HIGH	Take-Off Weight:	122357 lb	APU Flight:	272 lb
Engine A/I during flight:	<input type="radio"/> OFF <input checked="" type="radio"/> ON	Est. Landing Weight:	122357 lb	250 kts Limitation:	99 lb
Wing A/I during flight:	<input type="radio"/> OFF <input checked="" type="radio"/> ON	Flight Time:	2 h. 54 min.	A/C Packs:	0 lb
Engine A/I during descent:	<input type="radio"/> OFF <input checked="" type="radio"/> ON	TO % MAC:	19.12%	AI Engine Flight:	448 lb
		TO CG Offset:	-1.17 in.	AI Wings Flight:	704 lb
		Est. Landing %MAC:	19.12%	AI Engine Descent:	110 lb
		Est. Landing CG Offset:	-1.17 in.	TOTAL REQUIRED:	23026 lb

The tab also displays detailed information about your weights (empty, payload, zero fuel weight, ramp weight, as well as estimated take-off and landing weights), flight time, and center of gravity.


Load Passengers and Cargo

Go to the **Pax and Cargo Loading** panel by pressing button . Use sliders for each of the passenger or cargo zone to select your payload. As a passenger zone slider is being moved, the application randomly selects categories of passengers seated in each zone. When you load the plane with passengers, the cargo compartments are also automatically adjusted – the weight of luggage is added and evenly distributed between the two compartments. You may increase or reduce the cargo weight by dragging the slider representing each of the cargo compartments.



The application displays the number of passengers and their weights in each of the five (version 1.x – three) passenger zones, the total cargo weight, empty weight, total payload weight, and zero fuel weight.

The panel also displays the estimated Take-off MAC% which is automatically adjusted while you load passengers or cargo. If the estimated MAC% is outside of allowed limits, it becomes highlighted in red.

To load passengers and cargo in X-Plane, press button . Loading can be done instantly or in real time. Select the loading mode in the **Settings** panel.

Load Fuel

The application estimates the required fuel taking into account the following:

- Fuel required for taxi and ground APU;
- Trip burn fuel – fuel required for flying from Departure to Destination;
- Contingency fuel – usually 5% of the trip burn fuel;
- Final reserve fuel;
- Fuel required for flying from Departure to Alternate.
- Additional fuel (APU during cruise, A/C packs, A/I, and 250 knots limitation)

Select how much fuel you would like to load by moving either the left, right or center slider representing fuel tanks. Changing any of the wing sliders automatically adjusts the other wing slider. Alternatively, fuel may also be loaded manually. Enter the amount of fuel in the corresponding textboxes.

Tank	Max Capacity (lb)	Current Fuel (lb)
Left Tank	9921	8830
Center Tank	15432	6173
Right Tank	9921	8830

TOTAL FUEL REQUIRED: 23026 lb
TOTAL FUEL LOADED: 23832 lb


Amount of fuel impacts the center of gravity of the plane. As in the case with loading passengers, the Application estimates the take-off MAC% with the current fuel load. Loading fuel can also be done instantly or in real time. Select the loading mode in the **Settings** panel.


IMPORTANT! Fuel can only be loaded by the Application when the plane is cold and dark (APU and engines are not running). Otherwise, the fuel weight will not be adjusted in X-Plane.

ACARS

The **ACARS** panel displays the current flight information and tracks the position of your plane on the map. **The most recent version of iGoConnect must be installed in X-Plane for correct sharing of data between the Application and the simulator.**

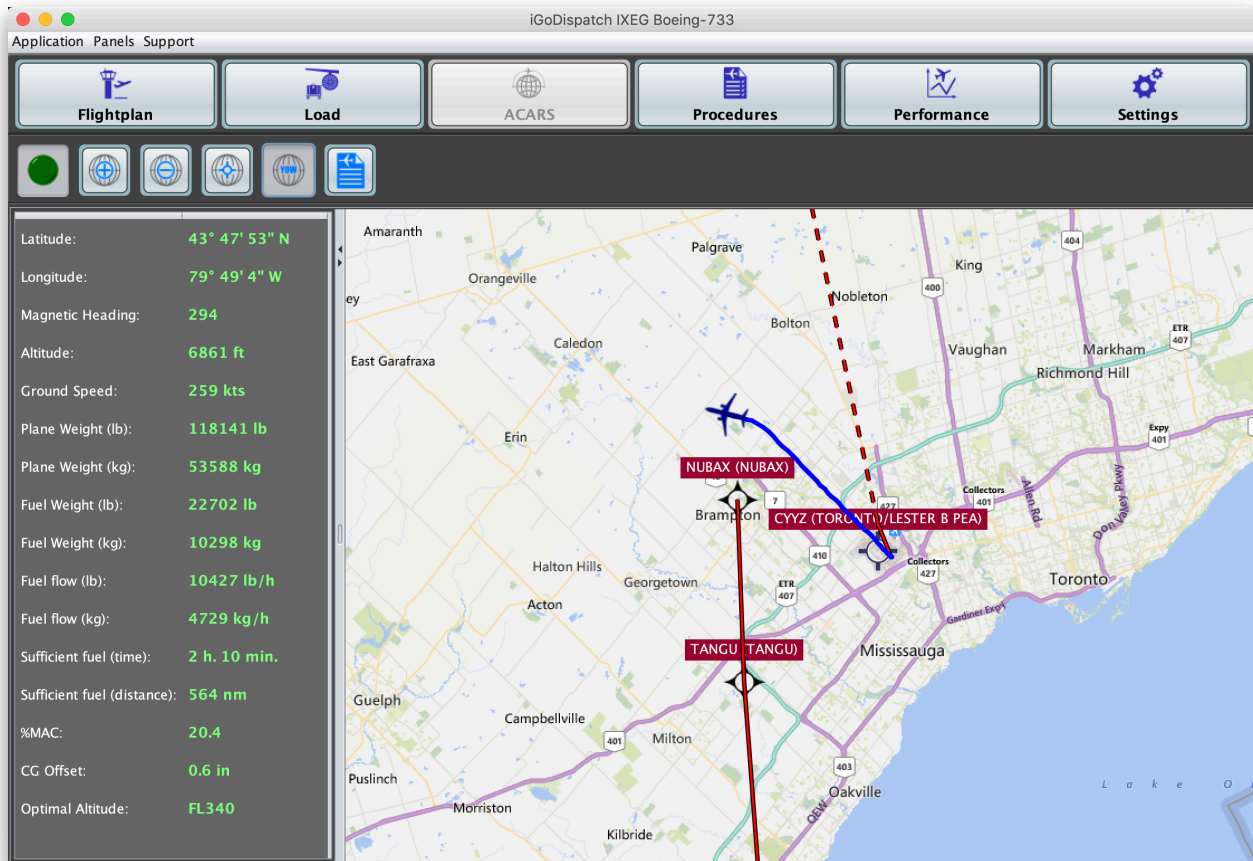
IMPORTANT! By default, the Application is not connected to X-Plane. When you upload the flight plan to FMC, download winds aloft data or pass the weight and CG information to the simulator, a temporary connection is established only for the duration required for sharing the data between the server and the client. In order to receive the ACARS data on the panel, the permanent connection with X-Plane must be set by pressing the connection toggle button.

Press button  to turn on ACARS. Once the connection with X-Plane is established, the

button will change to . The following data will be displayed on the Application panel:

- Current position of the airplane (latitude and longitude);
- Heading (true heading is used to display the plane image on the map and the magnetic heading is displayed for your information);
- Current total plane weight (in pounds and kilograms);
- Fuel weight and flow (in pounds and kilograms per hour);
- Ground speed (in knots);
- Remaining time and distance at the current fuel flow;

- Current altitude (in feet);
- Current %MAC and CG offset; and
- Optimal Altitude for the current weight.



The CG data (%MAC and offset) are dynamic values, i.e., they are constantly changing during the flight as the center of gravity is dependent on the weight of fuel. The application recalculates the current CG offset and dynamically adjusts this value in X-Plane, which results in more flight realism.

The panel includes the following additional functions for manipulation with the map:



— Zoom in the map;



— Zoom out the map;



— Center the map to the current flightplan;



— Turn on map annotations showing the names of flightplan waypoints. **When ACARS is on, annotations will appear at the time of the next data exchange between the server and the client, which may take a few seconds.**

Procedures

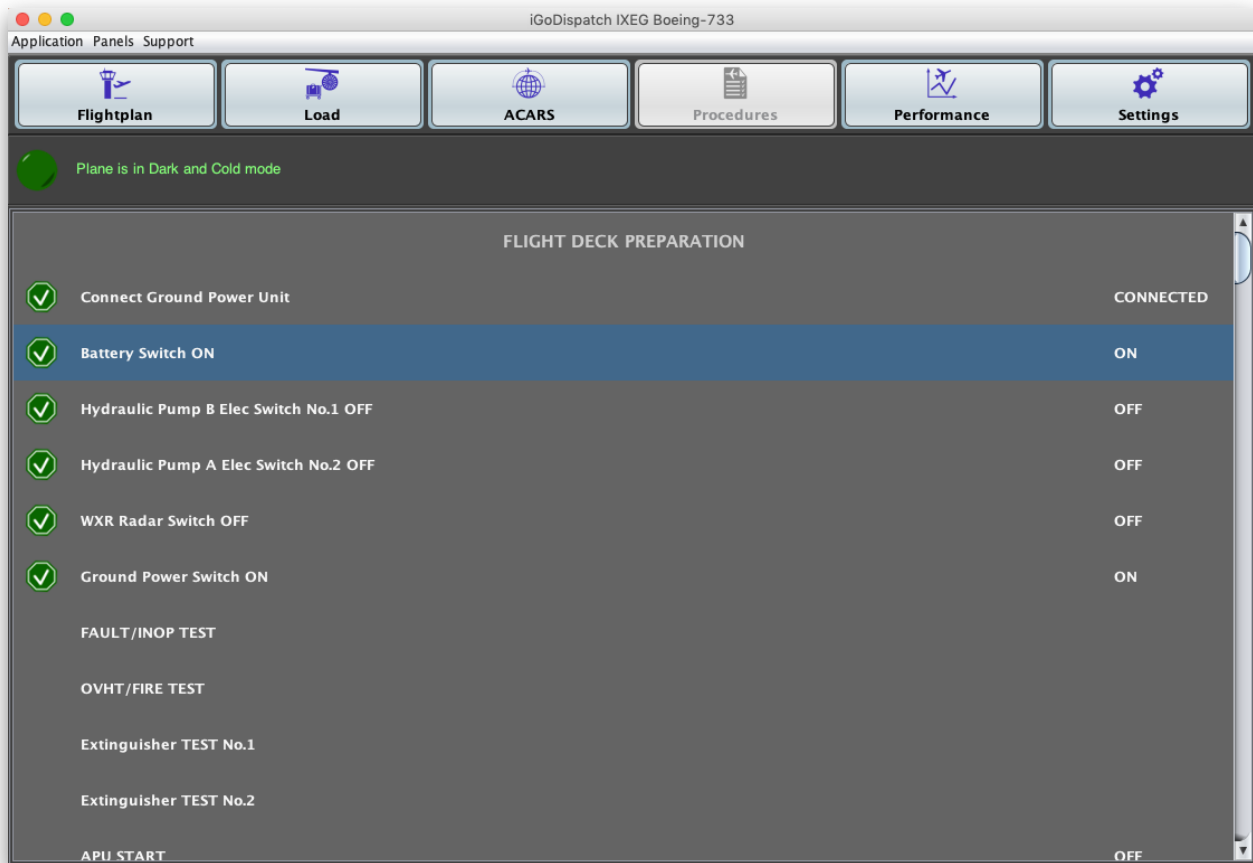
The **Procedures** panel presents a pre-takeoff checklist and enables the pilot to follow the completed procedures identified by a check mark. **The check marks will only be displayed in the panel if the plane has started in the Cold and Dark mode.** Otherwise, the panel will show the current status of each of the checklist items, but the check marks will not be displayed.

IMPORTANT! To follow procedures, the ACARS connection must be ON.

Otherwise, a warning will inform that no connection is available. The checklist is refreshed when a TCP message arrives from the server. Therefore, the completed procedure items may be check marked with a delay. If you wish to reduce the delay, the Refresh Rate may be changed in the Settings Panel.


It is not necessary to follow the exact order of the procedures in the list, although it is strongly recommended. The page will be scrolled down automatically once every item currently visible in the panel has been check marked.

Once the plane took off, the status of the checklist items will change to “EN ROUTE”.



Flight Performance

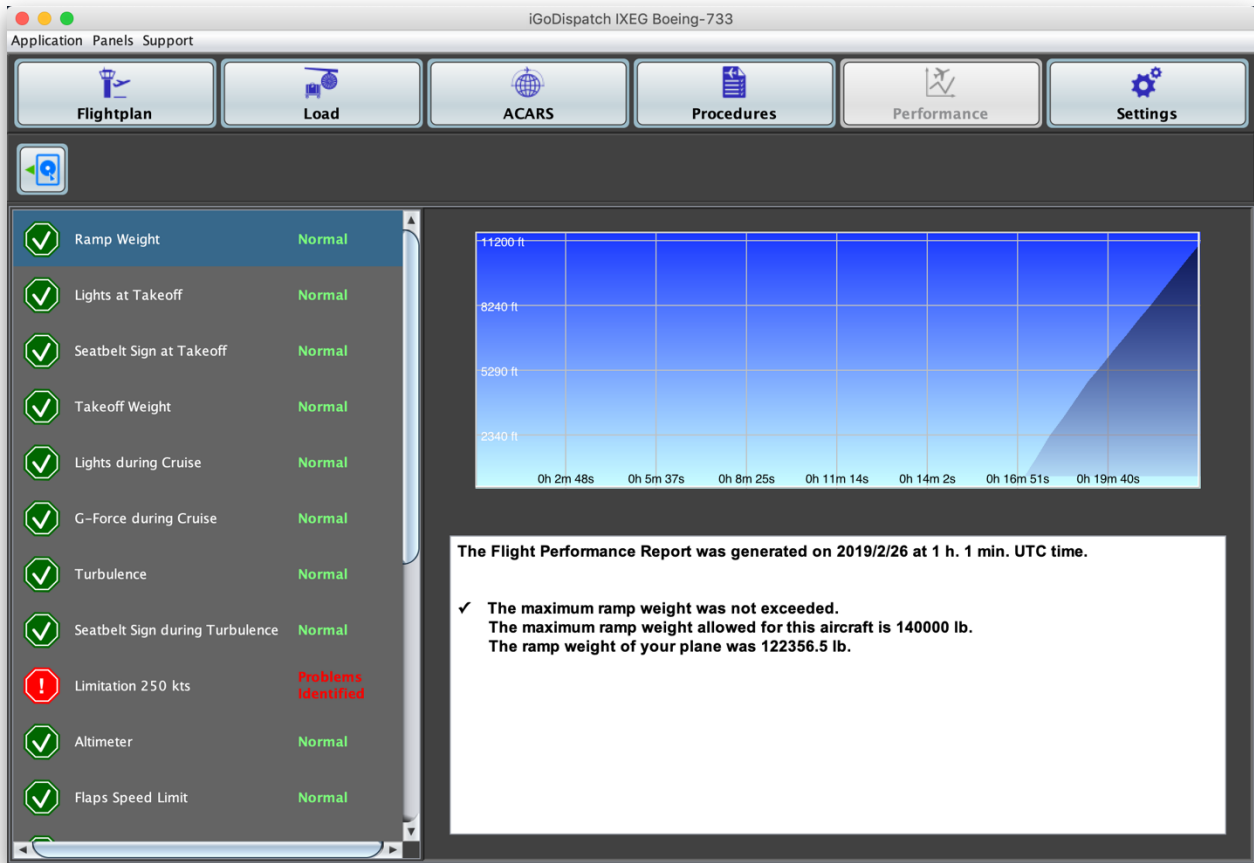
The **Performance** panel allows you to assess your flight performance based on over 30

parameters. Press button  to download the current performance report. **The most recent version of iGoConnect must be installed in X-Plane.**

IMPORTANT! Download your performance report **BEFORE** resetting your flight or closing X-Plane. As soon as the flight has been reset (e.g., a new plane has been loaded after your flight) or you have closed X-Plane, the performance report will be reset to a new flight and all data pertinent to the previous flight will be erased.

The option to save the previous reports is not available at this time so your old report will be deleted.


Using the table on the left side of the panel, select the parameter you are interested in. The Application will display the relevant information, including any problems identified. The graph will show the time when the problem occurred.



Have a safe flight!

TROUBLESHOOTING YOUR CONNECTION PROBLEM

If you cannot establish TCP connection with X-Plane via the iGoConnect plugin, try the following steps:

1. Make sure that X-Plane is running when you try to establish connection. Your plane has to be loaded in X-Plane.
2. Check the IP Address of your X-Plane computer. Make sure that this address is correctly entered on the Settings panel of the Application.
3. **Check the IP Address of your X-Plane computer again and whether it is correctly entered in the Application.** This is not a typo. Ninety nine percent of all cases where a problem with connection is reported account for entering the wrong IP address.
4. If you changed the port number on the application, do NOT forget to change it in the plugin. After the number has been changed, reload X-Plane.
5. Once the IP Address and the Port number are checked, type an ICAO code (e.g., **KLAX**) in the Departure textfield on the Flightplan panel. Tap on button  to upload the airport information. Has the information been successfully uploaded? If yes, you have no problem with the connection – everything works as it should.
6. If you still have problems connecting, you may have your firewall blocking the port and not allowing the Application to establish connection through it.
 - Start your X-Plane and wait till a plane finishes loading.
 - In Mac, open Terminal. In Windows, open Command Prompt window.
 - Type “telnet”, followed by the IP Address of the X-Plane computer (the one you need to enter in the Application), and the Port number. Do not use quotes, for example:
telnet 192.168.1.99 7767

7. If the connection was not established, you probably use a firewall that blocks the port and the port must be opened. Disabling your firewall completely is not necessary and is not recommended. You may temporarily disable your firewall to confirm that it causes your connection problem. Once the port opening rule is set, the firewall can be turned on again. In order to open the IP Port using default Windows and Mac firewalls, the following can be done:

For Windows:

- 1) Go to Control Panel > Windows Firewall
- 2) Click on "Advanced Settings" in the left-hand pane.
- 3) Click on "Inbound Rules" and then "New rule".
- 4) Select "Port", click next, select "TCP", and enter "7767" as the local port.
- 5) Click next, and allow the connection.
- 6) Click next again, and ensure that "Domain", "Private" and "Public" are all ticked.
- 7) Name your firewall rule, e.g. "iGoConnect", and then save it.

For Mac:

- 1) Go to System Preferences, and choose the Security and Privacy Tab.
- 2) Click on the Firewall Tab, and the Firewall options button.
- 3) The page will show you the applications that are allowed access through your firewall
- 4) Add new applications to the list by clicking on the plus icon.

If you have third party firewalls, please refer to their manuals.

8. If nothing worked:
- Send me an email to igodispatch@igoapp.ca. Do not forget to attach file **LogIGD.txt** that can be found in:
 - Windows: **C:\Program Files (x86)\iGoDispatchBoeing733\config\.**
 - Mac: **Macintosh HD/Library/iGoDispatchBoeing733\config\.**

We will fix it together!